

Mathematical methods in GR and QFT

Black holes from transplanckian-energy
collisions of ultrarelativistic sources

Gabriele Veneziano



COLLÈGE
DE FRANCE
—1530—

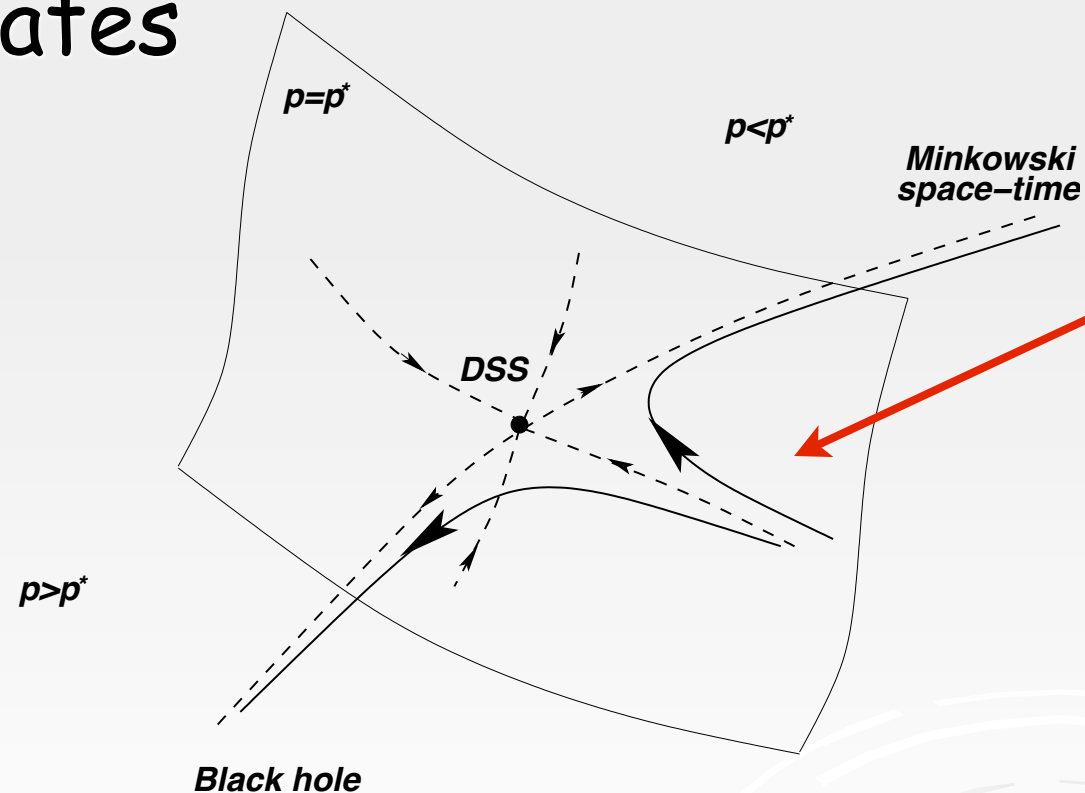


European Organization for Nuclear Research

Introduction

There are many beautiful (analytical as well as numerical) **GR** results on determining whether some given initial data should lead to gravitational **collapse** or to a **completely dispersed** final state

The two phases would be typically separated by a **critical hypersurface** $S_{cr}^{(CI)}$ in the parameter space $P^{(CI)}$ of the initial states



from C. Gundlach's review ('02)

The approach to criticality resembles that of **phase transitions** (order, crit. exp. ...)

Figure 1: Phase space picture of the critical gravitational collapse.

For pure gravity Christodoulou & Klainerman ('93) have found a region on the **dispersion side** of the critical surface;

Regions on the **collapse side** have been found for spherical symmetry by Christodoulou ('91, ...) and, numerically, by Choptuik and collaborators ('93, ...);

Last year, Christodoulou identified another such region in which a lower bound on (incoming energy)/(unit adv. time) holds uniformly over the full solid angle;

A few months ago Choptuik and Pretorius (0908.1780) have obtained new numerical results for a highly-relativistic axisymmetric situation (see below).

A useful (but only sufficiency) criterion for collapse is the identification of a **Closed Trapped Surface** (CTS) at a certain moment in the system's evolution

Christodoulou, Demetrios (2009).
The formation of black holes in general relativity.
Zurich: European Mathematical Society Publishing House.

Chapter 14 : The 1st Order Weyl Current Error Estimates

14.1 Introduction

14.2 The error estimates arising from J^1

14.3 The error estimates arising from J^2

14.4 The error estimates arising from J^3

Chapter 15 : The 2nd Order Weyl Current Error Estimates

15.1 The 2nd order estimates which are of the same form as the 1st order estimates

15.2 The genuine 2nd order error estimates

Chapter 16 : The Energy-Flux Estimates. Completion of the Continuity Argument

16.1 The energy-flux estimates

16.2 Higher order bounds

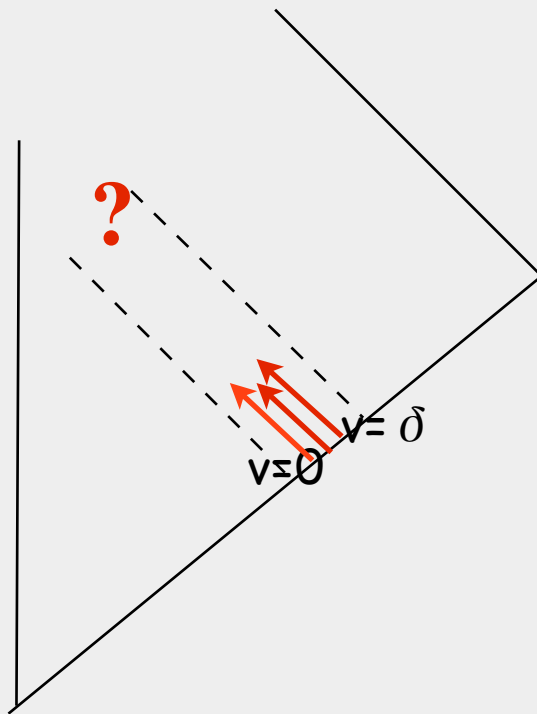
16.3 Completion of the continuity argument

16.4 Restatement of the existence theorem

Chapter 17 : Trapped Surface Formation

Essence of new DC's criterion

Penrose diagram



incoming energy ($G=1$) per unit advanced time & solid angle

$$\text{If } M(\theta, \phi, \delta) \equiv \int_0^\delta dv \frac{d\mathcal{M}(v, \theta, \phi)}{dv d\cos\theta d\phi} \geq \frac{k}{8\pi} \text{ for all } \theta, \phi$$

then, for $\delta/k \ll 1$, a CTS (hence a BH) forms with

$$R \geq k - O(\delta)$$

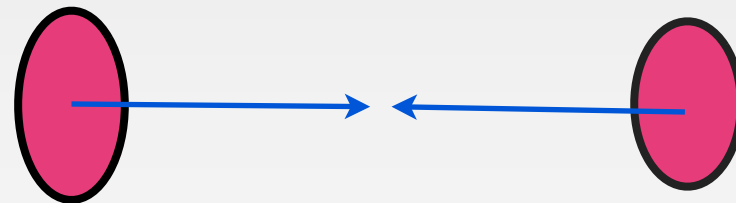
DC's result is not useful for **two-body** collisions, the energy being concentrated in two narrow cones but one can still get useful criteria through CTS constructions

➤ Point-particle collisions:

1. $b=0$: **Penrose** ('74) : $M_{BH} > E/\sqrt{2} \sim 0.71E$
2. $b \neq 0$: **Eardley & Giddings** ('02), one example:

$$\left(\frac{R}{b}\right)_{cr} \leq 1.25 \quad (R = 2G\sqrt{s} = 4GE_1 = 4GE_2)$$

➤ Extended sources:



- **Kohlprath & GV** ('02), one example: central collision of 2 homogeneous null discs of radius L

$$\left(\frac{R}{L}\right)_{cr} \leq 1 \quad \text{Using infinite-}L \text{ sln. \& causality one can prove that a curvature singularity forms as well (GV, unpl.)}$$

What about the quantum problem?

Quantum mechanically we can prepare pure initial states that correspond, roughly, to the classical data. They define a parameter space $P^{(Q)}$. Questions:

- Does a unitary S -matrix (evolution operator) describe the evolution of the system everywhere in $P^{(Q)}$?
- If yes, does such an S -matrix develop singularities as one approaches a critical surface $S_{cr}^{(Q)}$ in $P^{(Q)}$?
- If yes, what happens in the vicinity of this critical surface? Does the nature of the final state change as one goes through it? Is there a connection between $S_{cr}^{(Cl)}$ and $S_{cr}^{(Q)}$?
- What happens to the final state deep inside the BH region? Does it resemble at all Hawking's thermal spectrum for each initial pure state?
- Qs related to information paradox/puzzle (Hawking '75)

TPE collisions as a gedanken experiment

(Amati, Ciafaloni & GV 1987-'08)

Trans-Planckian-Energy (TPE $\Rightarrow E \gg M_{\text{Pl}} c^2$, or $G s / c^5 h \gg 1$)
string collisions represent a perfect theoretical laboratory for studying these questions within a framework that claims to be a fully consistent **quantum theory of gravity**.

The need for TPEs comes from our wish to understand the physics of **semiclassical** -rather than Planck size- black holes. It will also simplify the theoretical analysis.

The other important classical length was the impact parameter **b**. Its quantum mechanical equivalent is the ratio of angular momentum J and c.o.m. energy E . This is what will be meant by **b**

A phenomenological motivation for studying TPE collisions?

Finding signatures of string/quantum gravity @ LHC:

- * In KK models with large extra dimensions;
- * In brane-world scenarios; in general:
- * If the true Quantum Gravity scale is $O(\text{few TeV})$

NB: In the most optimistic situation the LHC will be very marginal for producing BH, let alone semiclassical ones

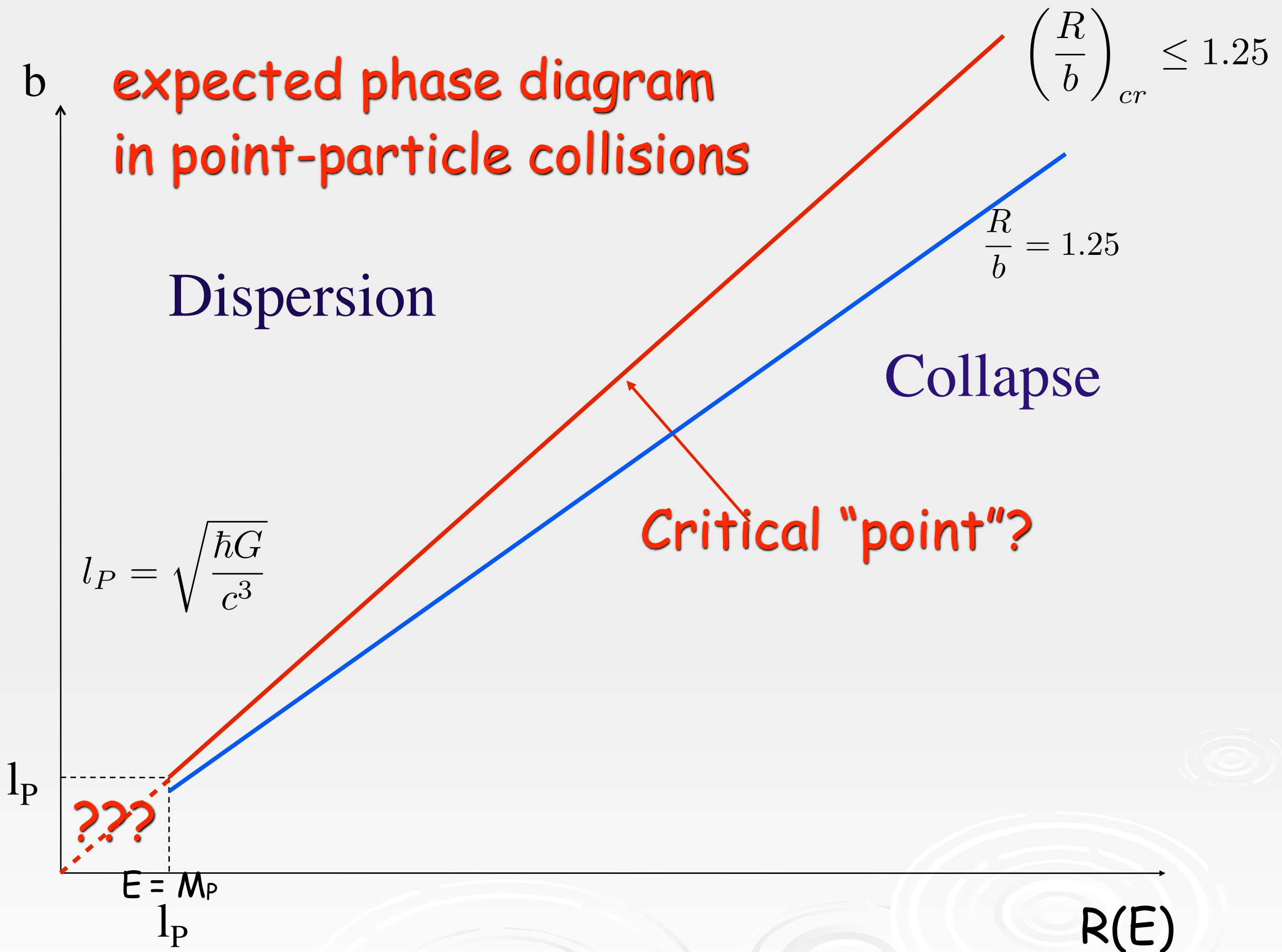
Q: Can there be some precursors of BH behaviour even below the expected BH-production threshold?



The rest of the talk

- Scales & regimes in TPE collisions
- The small angle regime
- String corrections
- Classical corrections
- Towards a quantum description of gravitational collapse





If we collide strings, instead of point particles, there is another length scale, the characteristic size l_s of strings

$$l_s = \sqrt{\frac{\hbar c}{T}} \quad \text{cf.} \quad l_P = \sqrt{\frac{\hbar G}{c^3}}$$

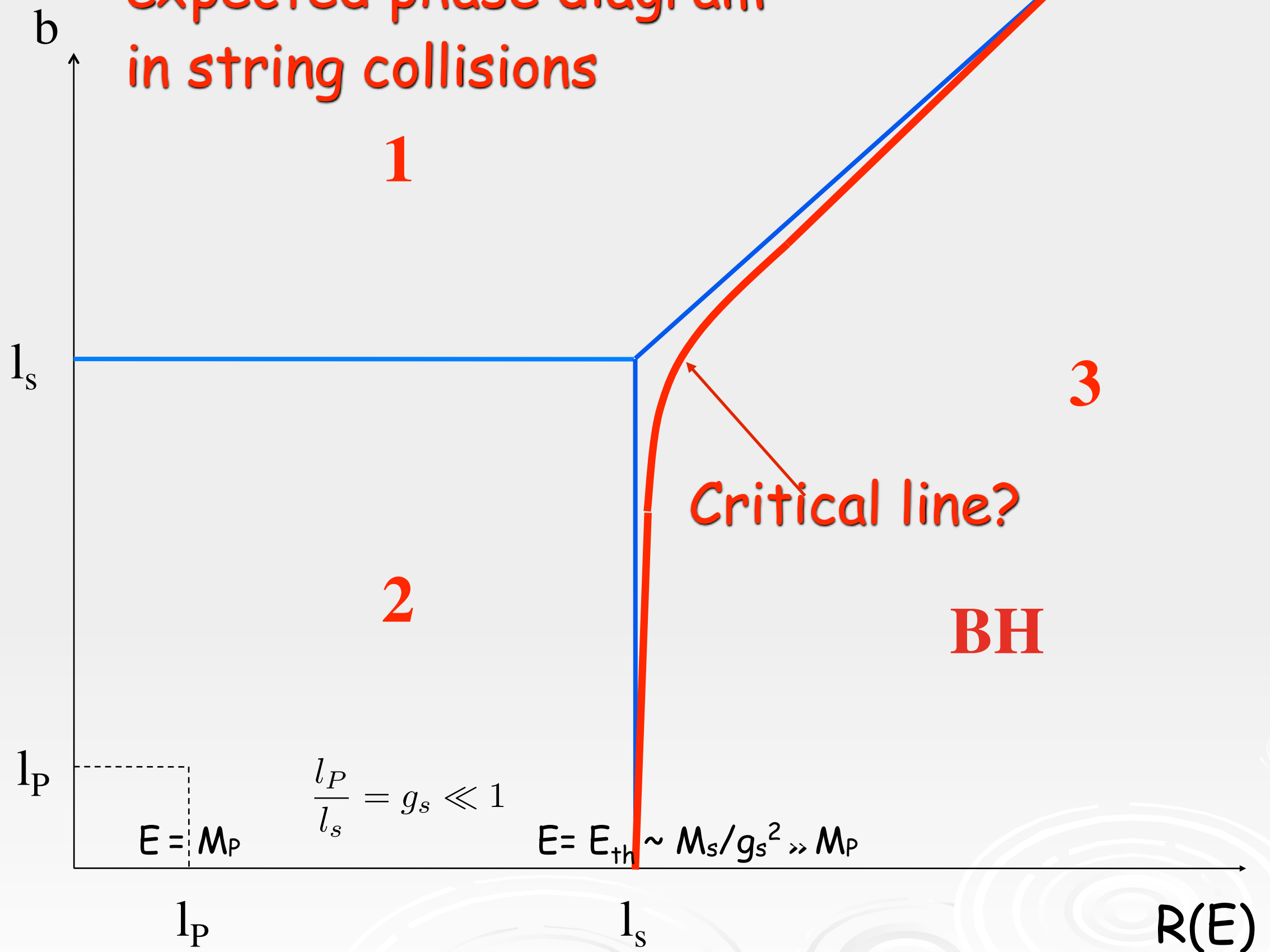
(T is the classical string tension)
 l_s plays the role of the beam size!

3 length scales: b , R and $l_s \Rightarrow$

3 broad-band regimes in transplanckian string collisions

- 1) **Small angle** scattering ($b \gg R, l_s$)
- 2) **Stringy** ($l_s > R, b$)
- 3) **Large angle** scattering ($b \sim R > l_s$), **collapse** ($b, l_s < R$)

expected phase diagram
in string collisions

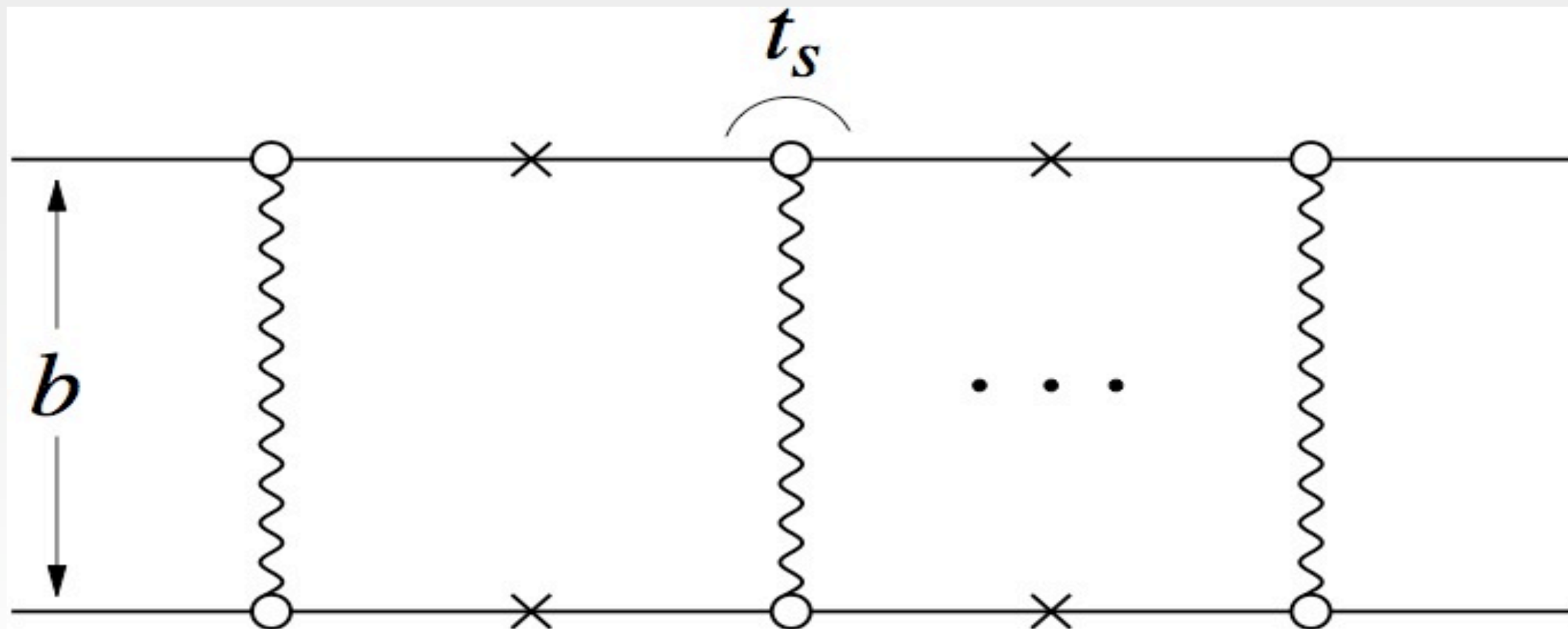


A semiclassical S-matrix @ TPE

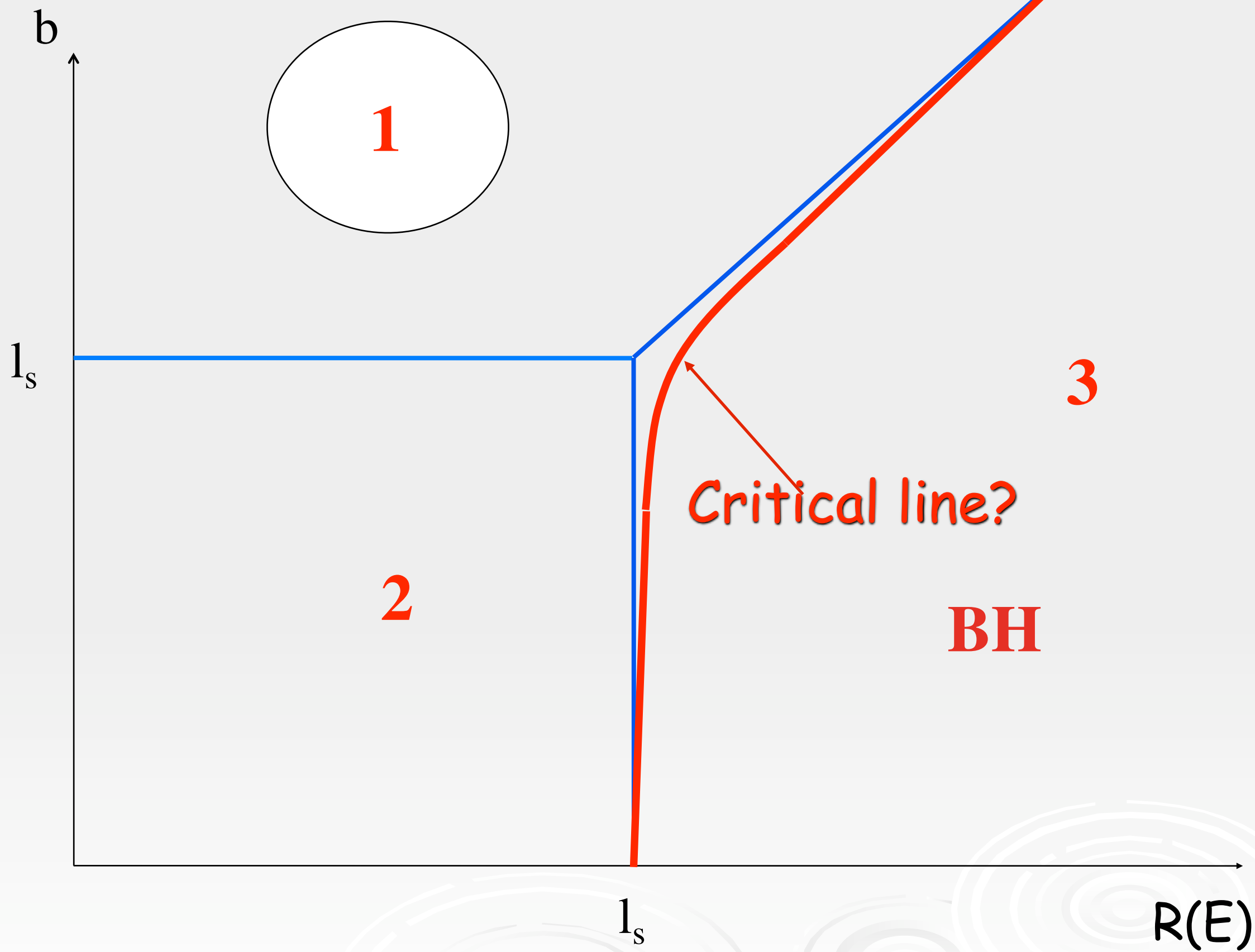
General arguments as well as explicit calculations suggest the following form for the elastic S-matrix:

$$S(E, b) \sim \exp\left(i\frac{A}{\hbar}\right) \sim \exp\left(-i\frac{G_s}{\hbar}(\log b^2 + O(R^2/b^2) + O(l_s^2/b^2) + \cancel{O(l_P^2/b^2)} + \dots)\right)$$

Leading eikonal diagrams (crossed ladders included)



NB: For $\text{Im } A$ some terms may be more than just corrections...



Recovering CGR expectations @ large distance

$$S(E, b) \sim \exp\left(-i\frac{Gs}{\hbar}\log b^2\right) ; S(E, q) = \int d^2b e^{-iqb} S(E, b) ; s = 4E^2 , q \sim \theta E$$

The integral is dominated by a saddle point at:

$$b_s = \frac{4G\sqrt{s}}{\theta} , \theta = \frac{4G\sqrt{s}}{b} = 2\frac{R}{b} , R \equiv 2G\sqrt{s}$$

the generalization of Einstein's deflection formula for ultra-relativistic collisions. It corresponds **precisely** (and for any D) to the relation between impact parameter and deflection angle in the (Aichelburg-Sexl) metric generated by a relativistic **point-particle** of energy E.

This effective metric is **not** put in: it's "**emergent**"

$$b_s = \frac{4G\sqrt{s}}{\theta}, \quad \theta = \frac{4G\sqrt{s}}{b} = 2\frac{R}{b}, \quad R \equiv 2G\sqrt{s}$$

- Note that at fixed θ , larger E probe **larger** b
- The reason is quite simple: because of eikonal exponentiation, $A_{cl} \sim Gs/\hbar$ also gives the average loop-number. The total momentum transfer **$q = \theta E$** is thus **shared** among $O(s \sim E^2)$ exchanged gravitons to give:

$$q_{ind} \sim \frac{\hbar q}{Gs} \sim \frac{\hbar \theta}{R} \sim \frac{\hbar}{b_s}$$

meaning that the process is soft at large s ...

String corrections in region 1

(relevant because of imaginary part)

$$S(E, b) \sim \exp\left(i\frac{A}{\hbar}\right) \sim \exp\left(-i\frac{Gs}{\hbar}(\log b^2 + \cancel{O(R^2/b^2)} + O(l_s^2/b^2) + \cancel{O(l_P^2/b^2)} + \dots)\right)$$

Graviton exchanges can excite one or both incoming strings. Reason: a string moving in a non-trivial metric feels **tidal forces** as a result of its finite size. A simple argument (**SG, GV**) gives, for any D, the critical impact parameter **b_D** below which the phenomenon kicks-in

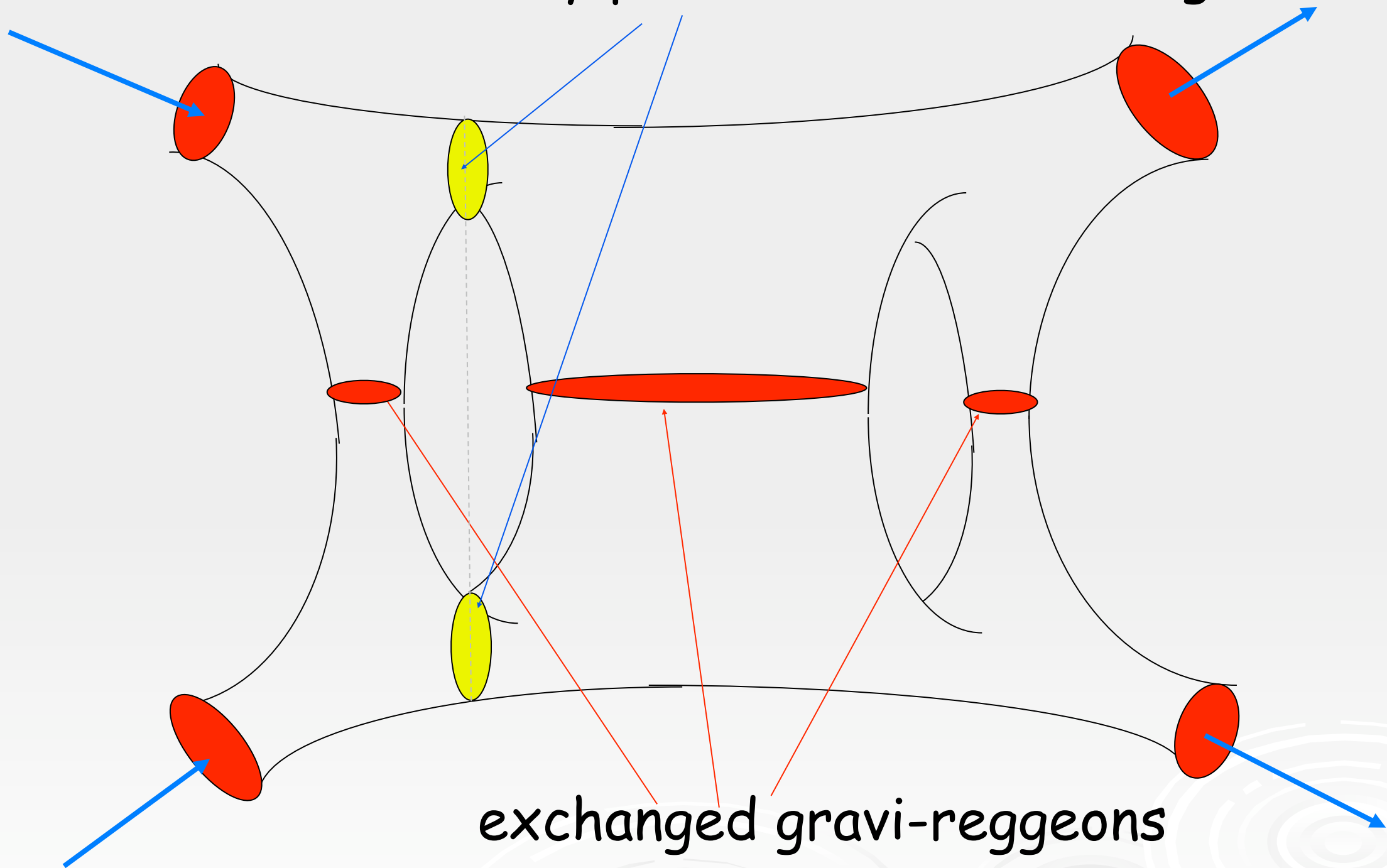
$$\theta_1 \sim G_D E_2 b^{3-D} \Rightarrow \Delta\theta_1 \sim G_D E_2 l_s b^{2-D}$$

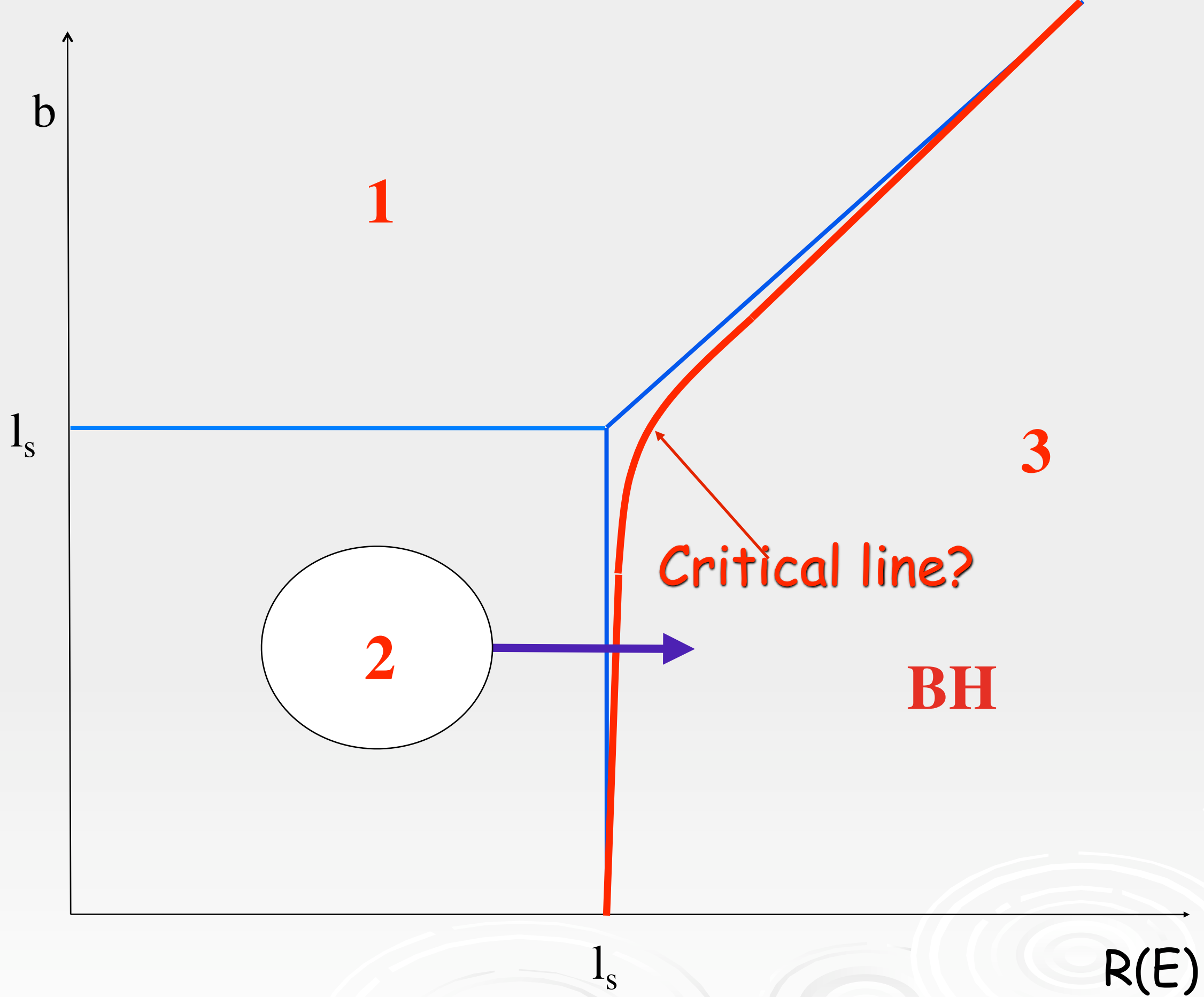
This angular spread provides an invariant mass:

$$M_1 \sim E_1 \Delta\theta_1 \sim G_D s l_s b^{2-D} = M_2 \quad \text{Strings get excited if}$$

$$M_{1,2} \sim M_s = \hbar l_s^{-1} \Rightarrow b = b_D \sim \left(\frac{G s l_s^2}{\hbar}\right)^{\frac{1}{D-2}} \quad \text{as found by ACV}$$

Diffractively produced closed strings





String-size corrections in region 2

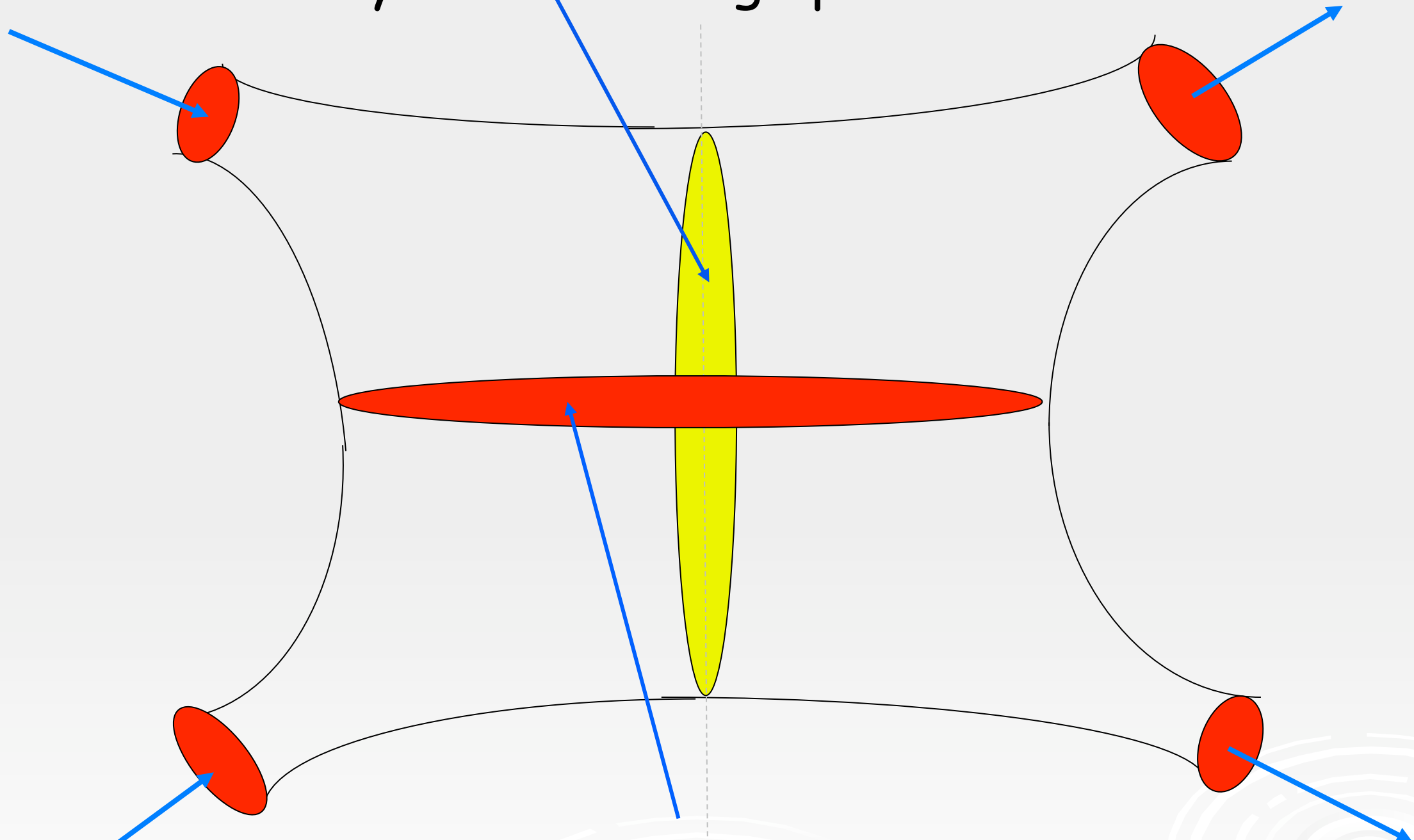
$$S(E, b) \sim \exp\left(i\frac{A}{\hbar}\right) \sim \exp\left(-i\frac{Gs}{\hbar}(\log b^2 + O(\cancel{R^2/b^2}) + O(l_s^2/b^2) + O(\cancel{l_P^2/b^2}) + \dots)\right)$$

Because of (DHS) duality even single graviton exchange does **not** give a **real** scattering amplitude. The imaginary part is due to **formation of closed-strings** in the s-channel.

It is exponentially damped at large impact parameter
(=> irrelevant in region 1, important in region 2)

Im A is due to closed strings in s-channel (DHS duality)

Heavy closed strings produced in s-channel



Gravi-reggeon exchanged in t-channel

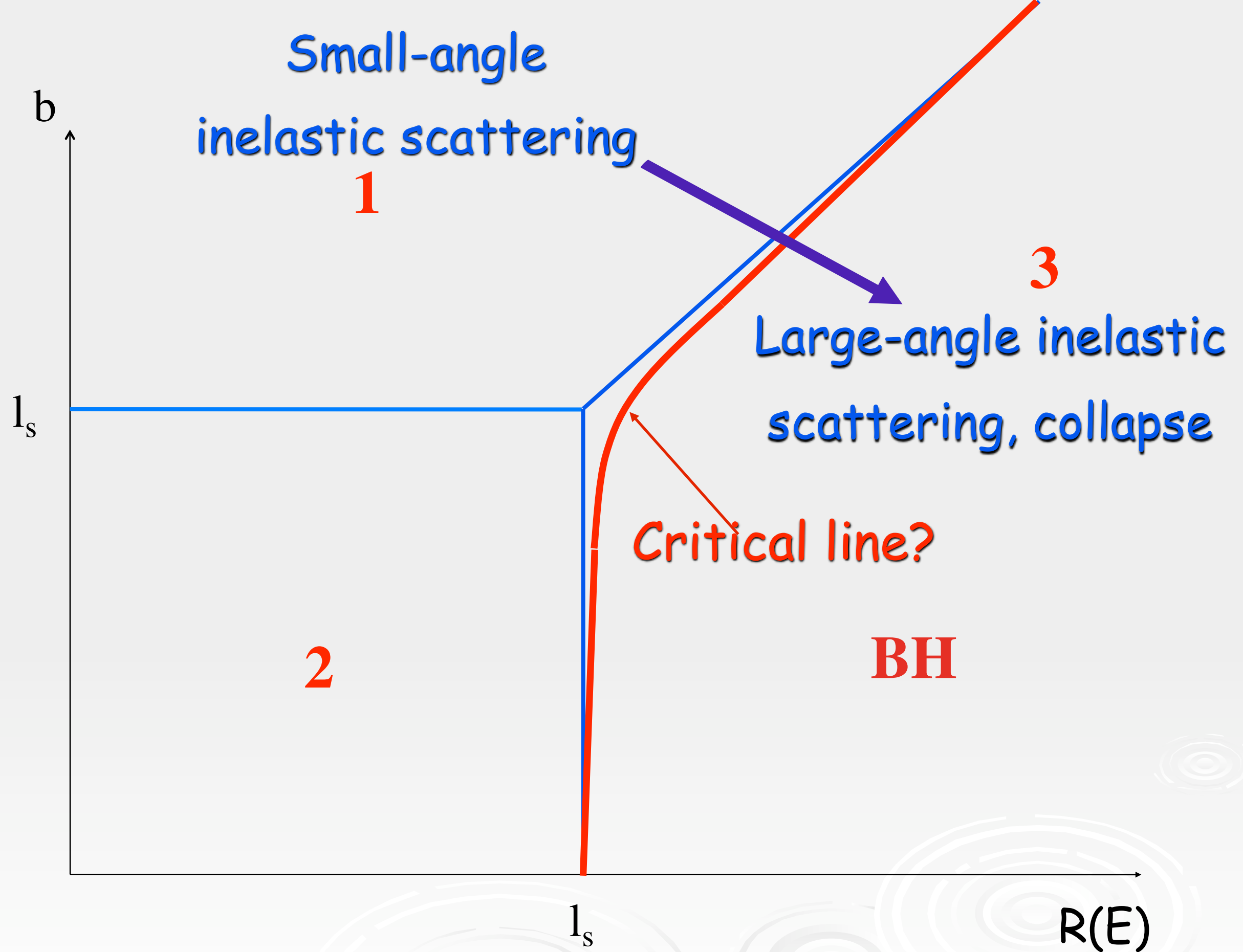
$$\text{Im}A_{cl}(E, b) \sim \frac{Gs}{\hbar} \exp\left(-\frac{b^2}{l_s^2 \log s}\right)$$

As one goes to impact parameters below the string scale one starts producing more and more strings. The average number of produced strings grows (once more!) like $Gs \sim E^2$ so that, above M_{Pl} , the average energy of each final string starts **decreasing** as the incoming energy is **increased**

$$\langle E_{final} \rangle \sim \frac{M_{Pl}^2}{\sqrt{s}} \sim T_{BH}$$

Similar to what we expect in **BH physics!**

An interesting signature even below the actual threshold of BH production!



Classical corrections

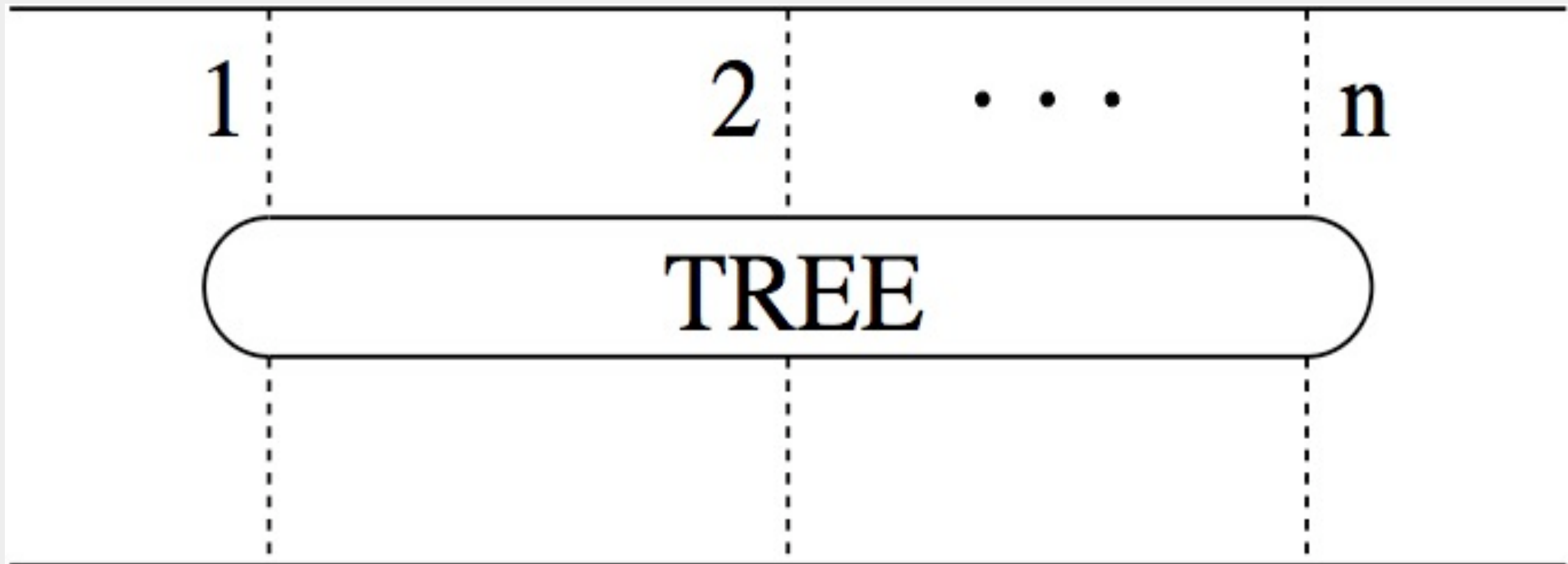
$$S(E, b) \sim \exp\left(i\frac{A_{cl}}{\hbar}\right) \sim \exp\left(-i\frac{Gs}{\hbar}(\log b^2 + O(R^2/b^2) + \cancel{O(l_s^2/b^2)} + \cancel{O(l_P^2/b^2)} + \dots)\right)$$

From small to large-angle inelastic
scattering ... and to gravitational collapse?

(ACV, hep/th-0712.1209, MO, VW, CC...'08)



Classical corrections are related to “tree diagrams”



Power counting for connected trees:

$$A_{cl}(E, b) \sim G^{2n-1} s^n \sim G s R^{2(n-1)} \rightarrow G s (R/b)^{2(n-1)}$$

Summing tree diagrams \Rightarrow solving a classical field theory.

Q: Which is the effective field theory for TP-scattering?

Reduced effective action & field equations

There is a **$D=4$ effective action** generating the leading diagrams (Lipatov, ACV '93). After (approximately) factoring out the longitudinal dynamics it becomes a **$D=2$ effective action** containing 4 fields:

a_1 and **a_2** , representing the longitudinal ($++$ and $--$) components of the metric, sourced by the EMT of the two fast particles;

ϕ , a complex field representing the TT components of the graviton field (i.e. the physical gravitons).

One polarization suffers from (well understood but bothersome) IR divergences. Limiting ourselves to the IR-safe polarization ϕ becomes real. In that case:

The action (neglecting rescattering for b not too small)

$$\begin{aligned} \frac{\mathcal{A}}{2\pi G s} &= \int d^2x \left[a(x) \bar{s}(x) + \bar{a}(x) s(x) - \frac{1}{2} \nabla_i \bar{a} \nabla_i a \right] \\ &\quad + \frac{(\pi R)^2}{2} \int d^2x \left(-(\nabla^2 \phi)^2 + 2\phi \nabla^2 \mathcal{H} \right), \\ -\nabla^2 \mathcal{H} &\equiv \nabla^2 a \nabla^2 \bar{a} - \nabla_i \nabla_j a \nabla_i \nabla_j \bar{a}, \end{aligned}$$

(for point-particles $s(x)$ is a δ -function)

The corresponding eom read:

$$\nabla^2 a + 2s(x) = 2(\pi R)^2 (\nabla^2 a \nabla^2 \phi - \nabla_i \nabla_j a \nabla_i \nabla_j \phi), \quad \nabla^2 \bar{a} + 2\bar{s}(x) = \dots$$

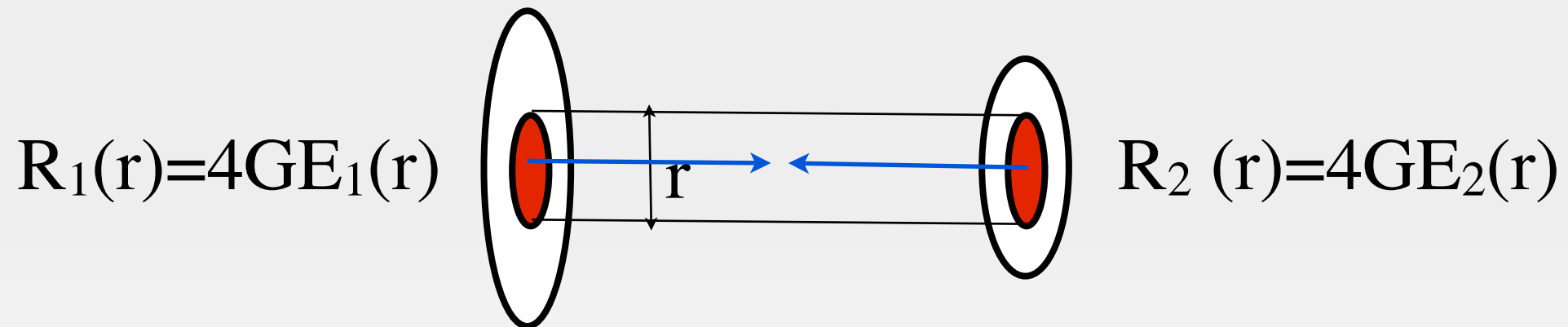
$$\nabla^4 \phi = -(\nabla^2 a \nabla^2 \bar{a} - \nabla_i \nabla_j a \nabla_i \nabla_j \bar{a})$$

The semiclassical approximation amounts to solving the eom and computing the classical action on the solution. This is why we took $Gs/\hbar \gg 1$!

Still too hard for analytic study, for numerics: see below

Axisymmetric beam-beam collisions

(ACV '07, J.Wosiek & GV '08)



A simpler, yet rich, problem:

1. The sources contain several parameters & we can look for critical surfaces in their multi-dim.^{al} space
2. The CTS criterion is simple (see below)
3. Numerical results are coming in (see CP, 2009)
4. One polarization not produced
5. And, last but not least, PDEs become ODEs

Equations, results

Introducing the auxiliary field ($t = r^2$) $\rho = t \left(1 - (2\pi R)^2 \dot{\phi} \right)$

eom become:

$$\dot{a}_i = -\frac{1}{2\pi\rho} \frac{R_i(r)}{R}$$
$$\ddot{\rho} = \frac{1}{2} (2\pi R)^2 \dot{a}_1 \dot{a}_2 = \frac{1}{2} \frac{R_1(r) R_2(r)}{\rho^2}$$

subject to boundary conditions

$$\rho(0) = 0 \quad , \quad \dot{\rho}(\infty) = 1$$

ACV vs. CTS

KV's criterion for existence of CTS: if there exists an r_c s.t.

$$R_1(r_c)R_2(r_c) = r_c^2$$

we can construct a CTS and therefore a BH forms.

Theorem (VW08): whenever the KV criterion holds*) the ACV field equations do **not** admit regular real solutions.

Thus:

KV criterion \Rightarrow ACV criterion

but not necessarily the other way around!

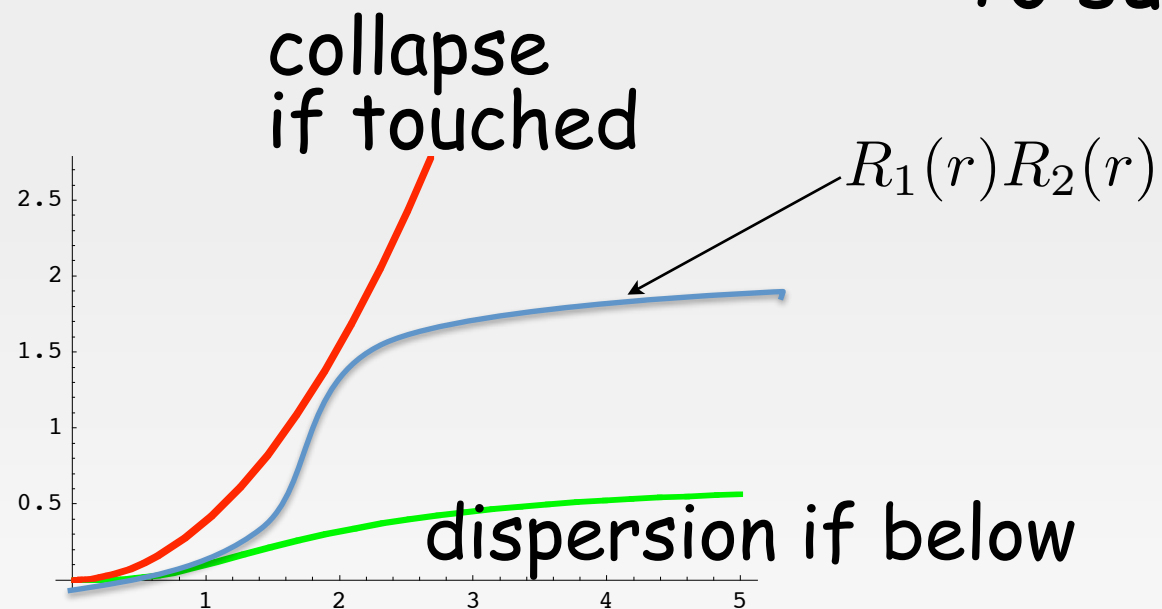
*) actually the r.h.s. can be replaced by $\frac{2}{3\sqrt{3}}r_c^2$

A sufficient criterion for dispersion

(P.-L. Lions, private comm.)

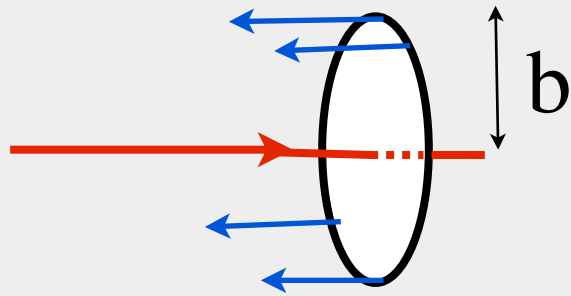
If
$$R_1(r)R_2(r) \leq \frac{8}{27} \frac{r^4}{(1+r^2)^2} \left[1 + \frac{1}{2} \left(1 - \frac{\log(1+r^2)}{r^2} \right) \right]^2$$
 the ACV eqns do admit regular, real solutions.

To summarize



clearly, there is room for improvement...

Example 1: particle-scattering off a ring



Can be dealt with **analytically**:

$$\ddot{\rho} = \frac{R^2}{2\rho^2} \Theta(r^2 - b^2) \qquad \begin{aligned} \rho &= \rho(0) + r^2 \dot{\rho}(0) \quad , \quad (r < b) \\ \dot{\rho} &= \sqrt{1 - R^2/\rho} \quad , \quad (r > b) \end{aligned}$$

Since $\rho(0) = 0$:

$$\rho(b^2) = b^2 \dot{\rho}(b^2) = b^2 \sqrt{1 - R^2/\rho(b^2)}$$

This (cubic) equation has
real solutions iff

$$b^2 > \frac{3\sqrt{3}}{2} R^2 \equiv b_c^2$$

$(b/R)_c \sim 1.61$
CTS: $(b/R)_c > 1$

Example 2: Two hom. beams of radius L .

The equation for ρ becomes

$$\ddot{\rho}(r^2) = \frac{R^2}{2\rho^2} \Theta(r - L) + \frac{R^2 r^4}{2L^4 \rho^2} \Theta(L - r)$$

We can compute the critical value numerically:

$$\left(\frac{R}{L}\right)_{cr} \sim 0.47$$

It is compatible with (and a factor 2.13 below) the CTS upper bound of KV:

$$\left(\frac{R}{L}\right)_{cr} < 1.0$$

Example 3:

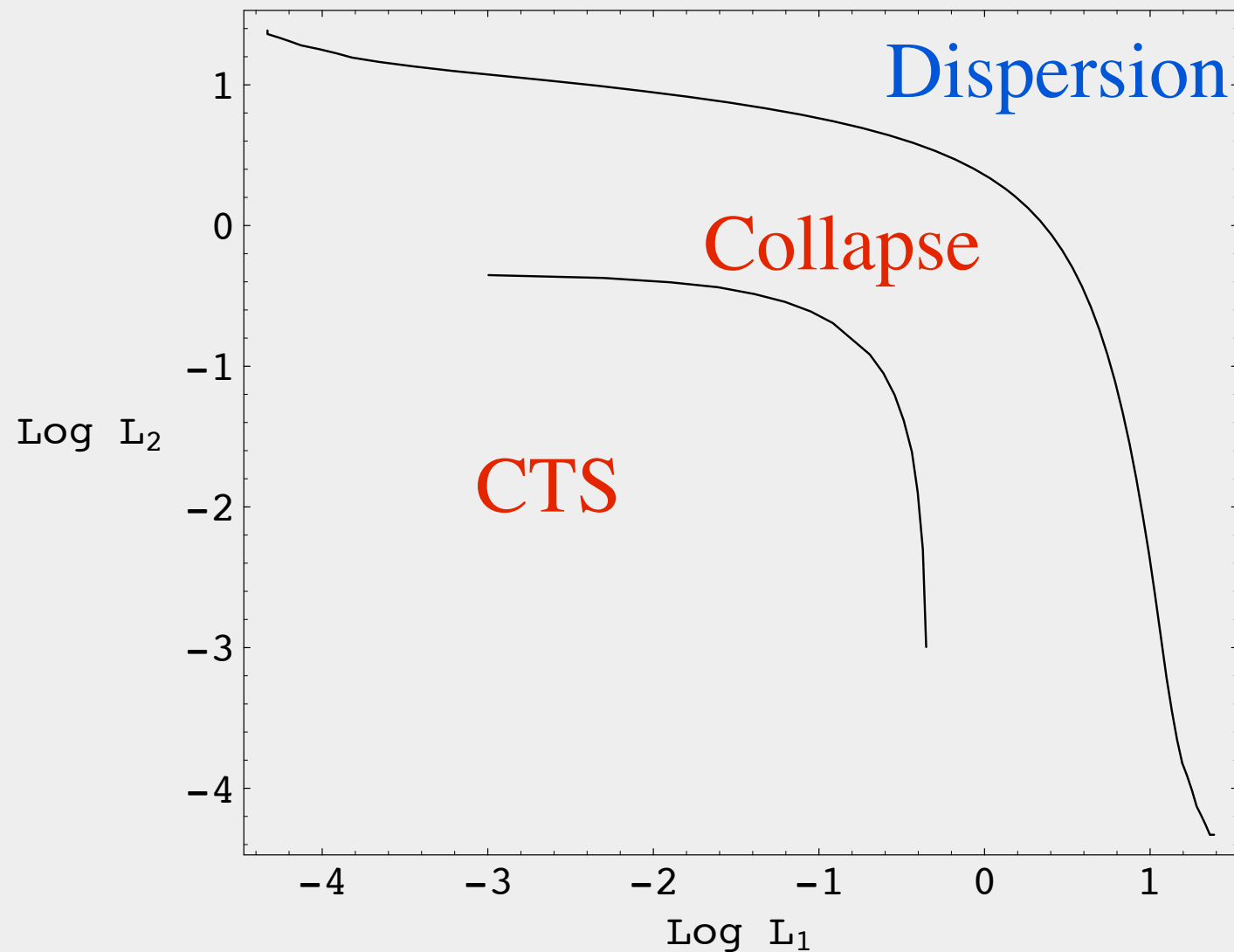
Two different Gaussian Beams

(GV&J.Wosiek '08)

Consider two extended sources (beams) with the same fixed total energy and Gaussian profiles centered at $r=0$ but with arbitrary widths L_1 and L_2

$$s_i(t) = \frac{1}{2\pi L_i^2} \exp\left(-\frac{t}{2L_i^2}\right), \quad \frac{R_i(t)}{R} = 1 - \exp\left(-\frac{t}{2L_i^2}\right)$$

Determine numerically critical line in (L_1, L_2) plane and compare it with the one coming from the CTS criterion.



For $L_1 = L_2$, L_c is a factor 2.70 above CTS's lower bound

In 0908.1780 **Choptuik & Pretorius** analyzed a "similar" situation numerically. BH formation occurs about a factor 3 above the naive CTS value: a coincidence?

Particle-particle collisions at finite b

Numerical solutions

(G. Marchesini & E. Onofri, 0803.0250)

Solve directly PDEs by FFT methods in Matlab

Result: real solutions only exist for

$$b > b_c \sim 2.28R$$

Compare with EG's CTS lower bound on b_c

$$b_c > 0.80R$$

b_c is a factor 2.85 above CTS's lower bound

What happens below b_c ?

(ACV '07, M. Ciafaloni & D. Colferai '08, '09)

If we insist on regularity at $r=0$, for $b < b_c$ we end up with complex classical solutions $\Rightarrow \text{Im } A_{cl} \neq 0$.

$\text{Im } A_{cl}$ induces in the S-matrix a new absorption on top of the one due to graviton emission. The meaning of this new absorption is still unclear. One possibility is to associate it with the opening on new channels related to black-hole production.

Progress on this issue has been obtained by M. Ciafaloni & D. Colferai (0807.2117, 0909.4523) by adding a class of quantum corrections to the semiclassical approximation but some questions still remain open

Particle Spectra

(ACV07, VW08/2, M. Ciafaloni & GV in progress)

We can study the spectrum of the produced particles by looking at various contributions to the imaginary part of the elastic amplitude at fixed E & b (E -cons. important)

The final spectrum is of the form :

$$\frac{1}{\sigma} \frac{d\sigma}{d^2k dy} = \frac{Gs}{\hbar} R^2 \exp \left(-\frac{|k||b|}{\hbar} (1 + \cosh y R^3/b^3) \right)$$

showing that, while for $b \gg R$ gravitons are produced at small angles, as $b \rightarrow b_c \sim R$ their distribution **becomes** more and more **spherical** w/ $\langle n \rangle \sim Gs$ and (again!) characteristic energy $O(1/R \sim T_H)$

A gravitational "energy crisis"?

(M. Ciafaloni & GV in progress)

$$\frac{1}{\sigma} \frac{d\sigma}{d^2k dy} = \frac{Gs}{\hbar} R^2 \exp \left(-\frac{|k||b|}{\hbar} (1 + \cosh y R^3/b^3) \right)$$

Using this formula the fraction of energy emitted in GW turns out to be $O(1)$ already for $b=b^* \gg R$ (i.e. for $\theta \ll 1$), where $Gs/\hbar (R/b^*)^2 = O(1)$. This is somewhat puzzling from a GR perspective...and is related to a crucial

Q: What is the frequency cutoff on the GWs emitted in an ultrarelativistic small angle ($b \gg R$) 2-body scattering? Possible answers: $1/b$, γ/b , $1/R$, ... (not E/\hbar unless...).

Does anyone here know?

Summary

- **Gedanken experiments** have played an important role in the early developments of Quantum Mechanics.
- **TPE collisions** may well play a similar role for understanding whether & how **QM & GR** are mutually compatible
- **Superstring theory** in flat space-time offers a **concrete framework** where the **quantum** scattering problem is well-posed.
- The problem simplifies by considering $Gs/\hbar \gg 1$ since a suitable semiclassical approximation can be justified. Within that constraint we have considered various regimes, roughly classified as follows:

- A **large impact parameter** regime, where an eikonal approximation holds and GR expectations are recovered (**emerging** AS metric, tidal excitation..)
- A **stringy** regime, where one finds an approximate S-matrix with some characteristics of BH-physics as the expected BH threshold is approached from below
- A **strong-gravity (large $R \sim GE$)** regime where an effective action approach can be (partly) justified and tested
- **Critical** points (lines) have emerged matching well CTS-based GR criteria (within an intriguing factor 2-3)

- As the critical line is approached, the final state starts **resembling a Hawking-like spectrum**: a fast growth ($\sim E^2$) of **multiplicity** w/ a related **softening** of the final state.
- Progress was made towards constructing a **unitary S-matrix** and understanding the physics of the process as the critical surface is reached and possibly crossed
- **Much more work remains to be done**, but an understanding of the quantum analog/replacement of GR's gravitational collapse does no-longer look completely out of reach...

THANK YOU

